

Skills Worksheet

Directed Reading A

Section: What Is an Animal?

- _____ 1. Natural bath sponges are the remains of
- | | |
|-------------|--------------------|
| a. plants. | c. volcanic rocks. |
| b. animals. | d. sea grass. |

ANIMAL DIVERSITY

- _____ 2. Which list contains organisms that are NOT animals?
- | |
|--------------------------------------|
| a. feather stars, corals, sea fans |
| b. fish, spiders, birds |
| c. slugs, kangaroos, monkeys |
| d. giraffes, grizzly bears, cactuses |
- _____ 3. Of the known animal species, how many are vertebrates?
- | | |
|-----------------|------------------|
| a. about 10% | c. about 25% |
| b. less than 5% | d. more than 30% |
- _____ 4. Of all animal species, how many are beetles?
- | | |
|-----------------|------------------|
| a. about 10% | c. about 25% |
| b. less than 5% | d. more than 30% |
- _____ 5. An animal with a backbone is called a(n) _____.
- _____ 6. Animals without backbones are called _____.

Look at the following list of animals. Decide if each animal is a vertebrate or an invertebrate. Write / if it is an invertebrate. Write V if it is a vertebrate.

- _____ 7. fish
- _____ 8. amphibian
- _____ 9. jellyfish
- _____ 10. reptile
- _____ 11. snail
- _____ 12. bird
- _____ 13. worm
- _____ 14. mammal
- _____ 15. insect

Directed Reading A *continued*

ANIMAL CHARACTERISTICS

16. Until about 200 years ago, most people thought sponges
were _____.
17. All animals are _____, which means they are made of
many cells.
18. Animal cells are _____, which means they have
a nucleus.
19. Unlike plant cells, animal cells do not have _____.
20. Animal cells are surrounded only by _____.
21. Almost all animals reproduce _____.
22. Animals produce sex cells, which are called _____ and
_____.
23. An organism at an early stage of development is called
a(n) _____.
24. In _____, part of an organism breaks off and develops
as a new organism.
25. Through the process of _____, cells develop into
different kinds of cells.
26. Collections of similar cells are called _____.
27. A group of tissues that carry out a special function of the body is called
a(n) _____.
28. What are three things that animals use movement for?

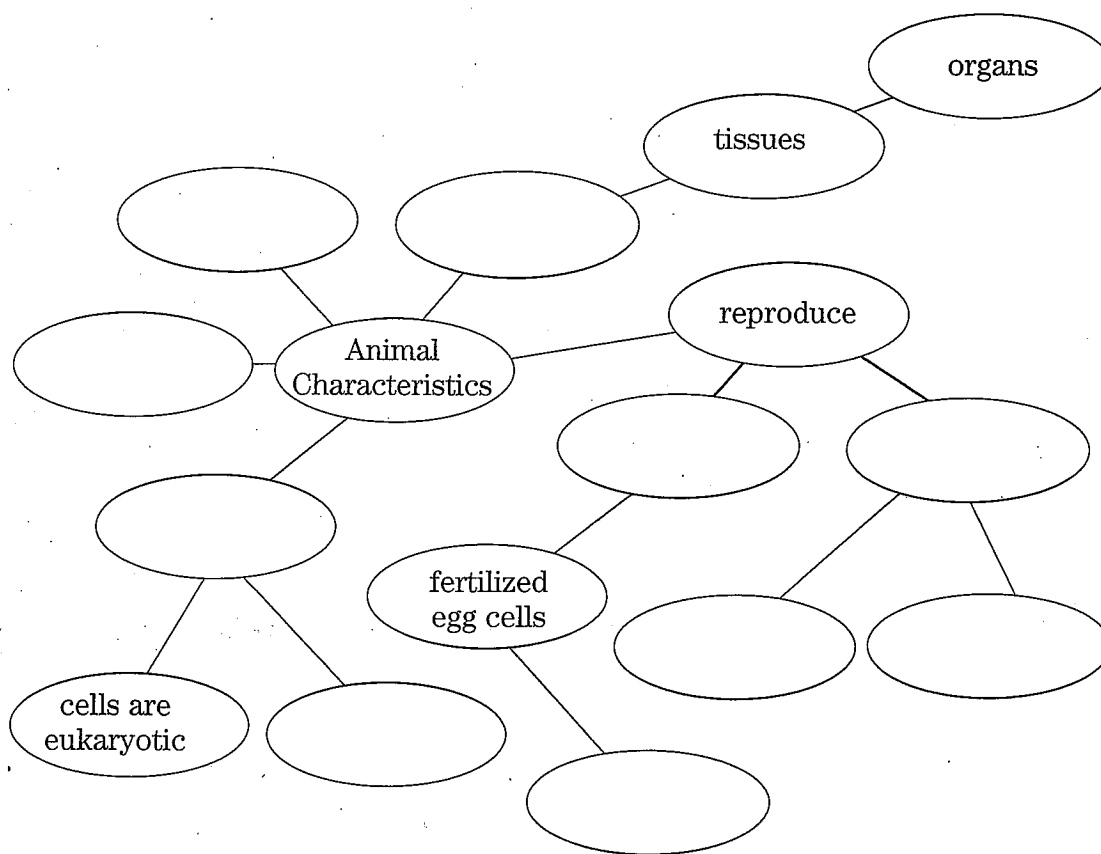
29. An organism that eats other organisms is called
a(n) _____.

Skills Worksheet

Reinforcement**What Makes an Animal an Animal?**

Complete this worksheet after you finish reading the section "What Is an Animal?"

Whales, armadillos, hummingbirds, spiders... Animals come in all shapes and sizes. Not all animals have backbones, and not all animals have hair. So what makes an animal an animal? To answer that question, complete the chart below by using the words and phrases at the bottom of the page.

Animal Characteristics**WORDS AND PHRASES**

- move
- budding
- develop from embryos
- have specialized parts
- sexually
- asexually
- multicellular
- cells have no cell walls
- division
- are consumers